



Welcome to Iowa State University's College of Veterinary Medicine!

Our names are Kama (left) & Malu (right). We recently moved to Ames from Laupahoehoe, Hawaii. We have traveled around Ames and nearby towns to help ourselves feel more at home. Please allow us to be your virtual tour guides to local hiking favorites.

We hope to see you out for a walk with your favorite two or four legged friends!

Cy Challenge

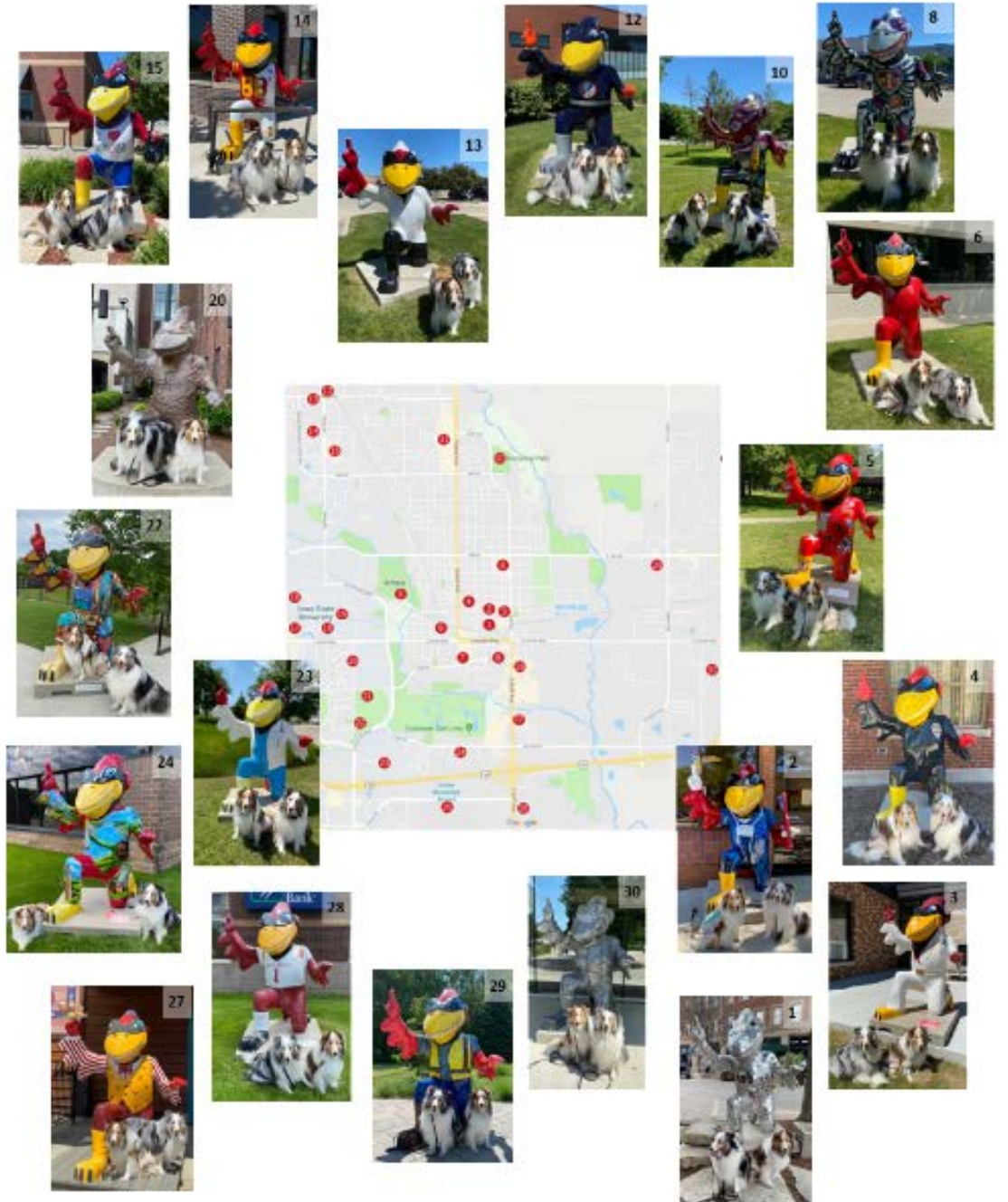
Take a photo with every Cy statue

OR

Take your pets photo with every Outdoor Cy statue

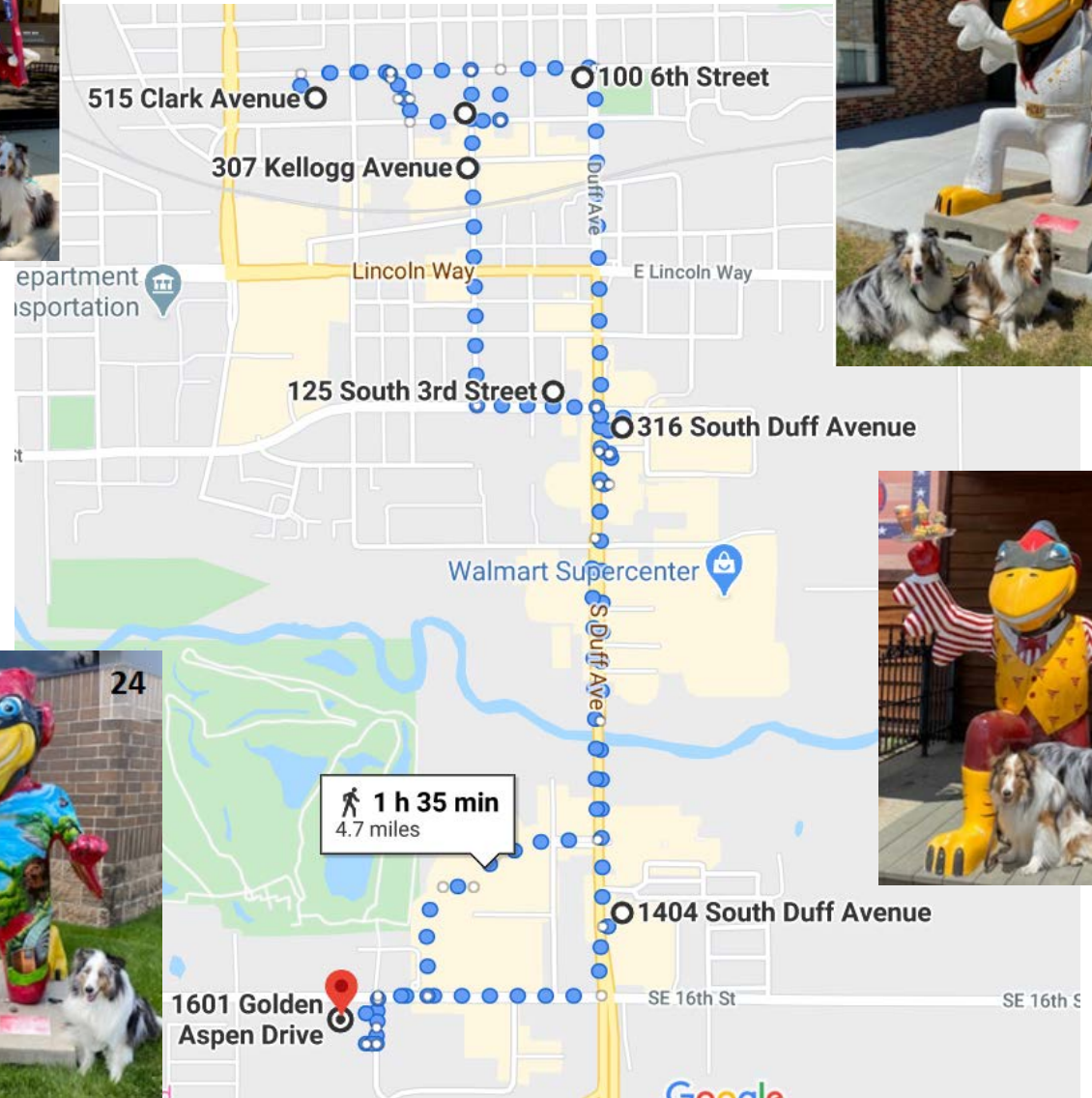
Cy Map available Online at:

<https://www.thinkames.com/wp-content/uploads/2019/07/Cyclone-City-Map-07-19-1.pdf>



Walk 1- 4.7 Miles

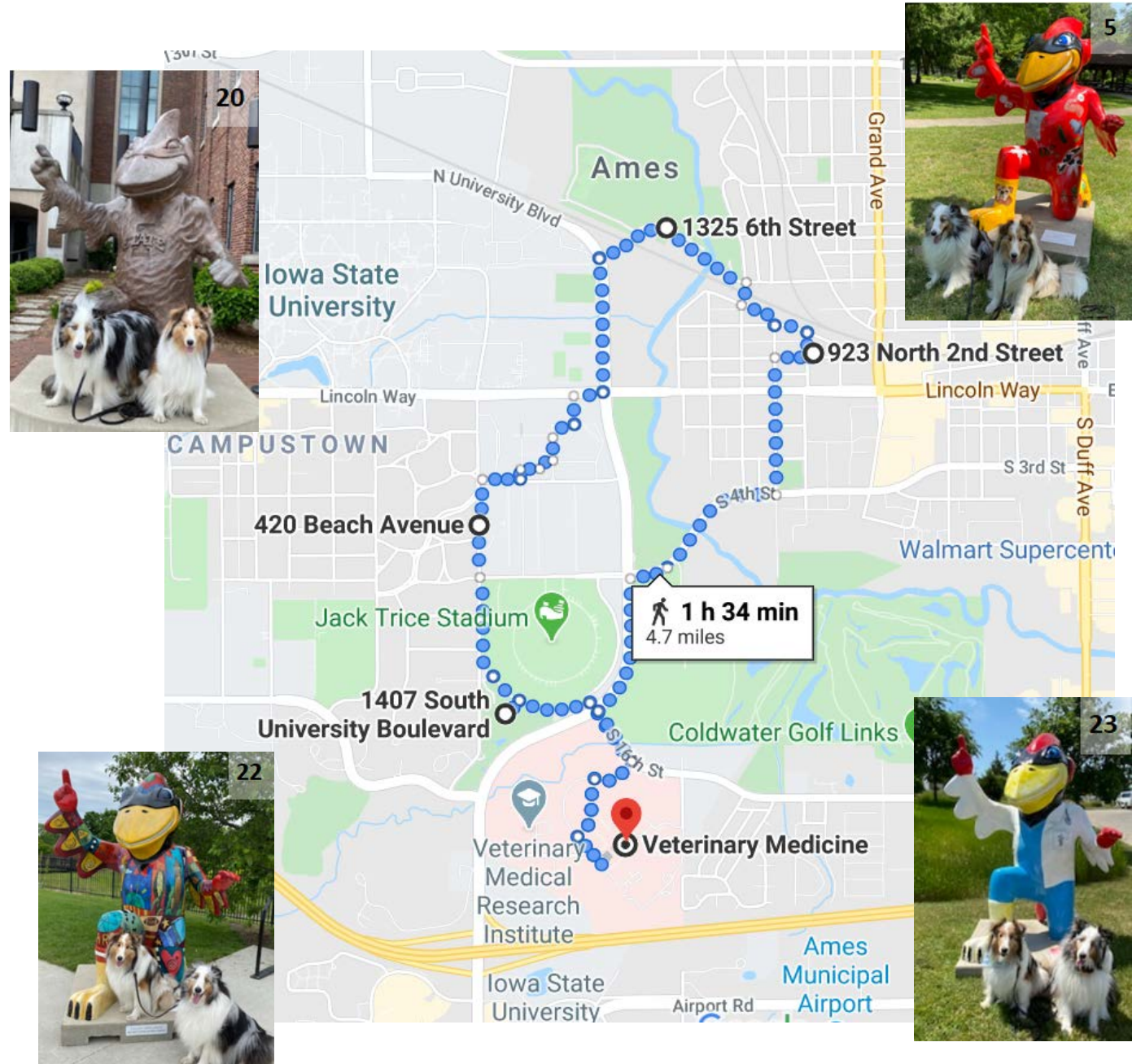
- Cy 24: 1601 Golden Aspen Dr.
- Cy 27: 1404 S Duff Ave.
- Cy 28: 316 S duff Ave.
- Cy 8: 125 S 3rd St.
- Cy 1: 307 Kellogg Ave.
- Cy 4: 515 Clark Ave.
- Cy 2: 301 5th St.
- Cy 3: 100 6th St.



*Stop by Treats on a Leash in Downtown Ames for treats or a bowl of water

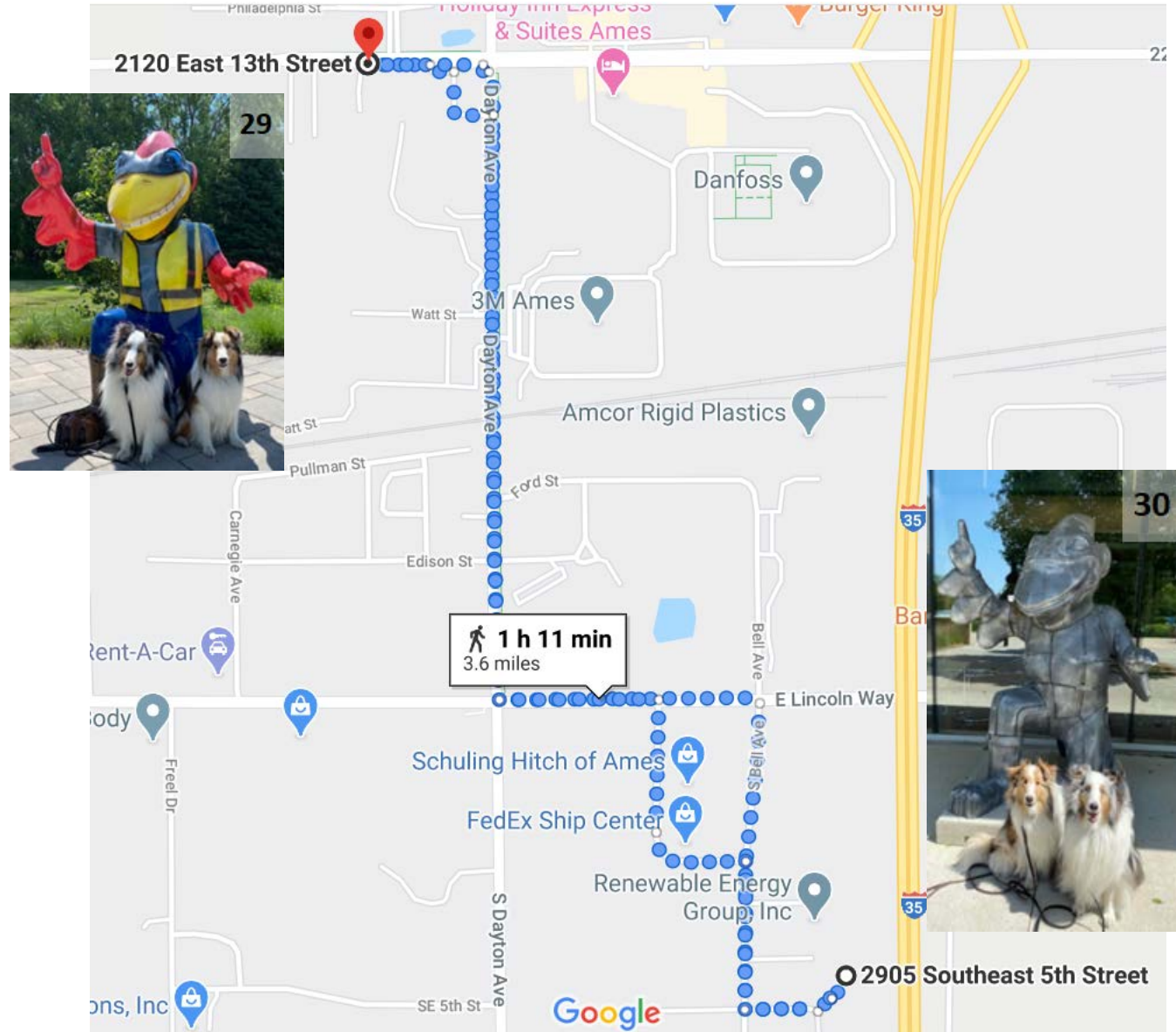
Walk 2- 4.7 miles

- Cy 23: 1800 Christensen Dr.
- Cy 22: 1407 University Blvd.
- Cy 20: 420 Beach Ave.
- Cy 5: 1325 6th St.
- Cy 6: 923 N 2nd St.



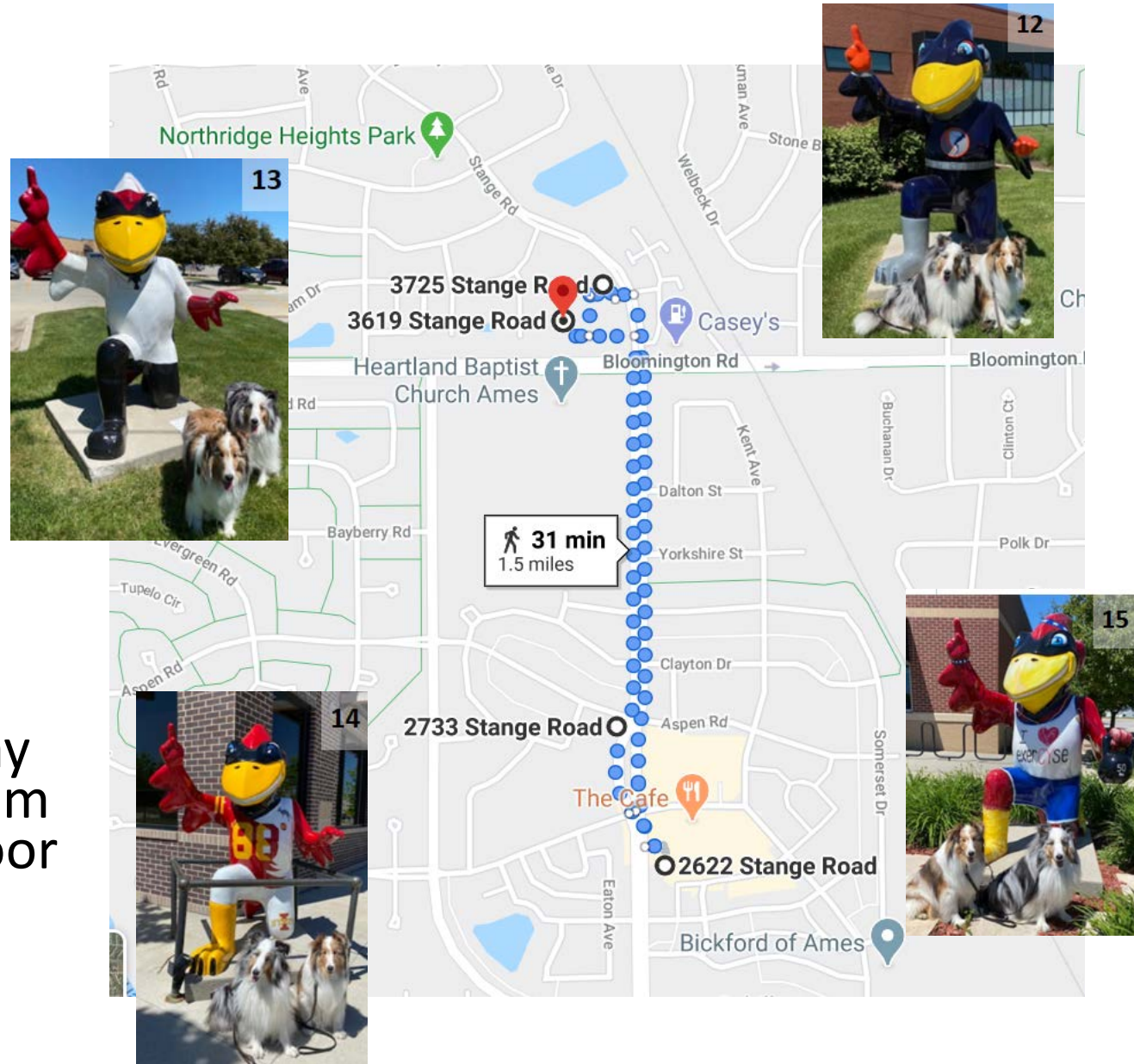
Walk 3- 3.6 miles

- Cy 29: 2120 E 13th St.
- Cy 30: 2905 SE 5th St.



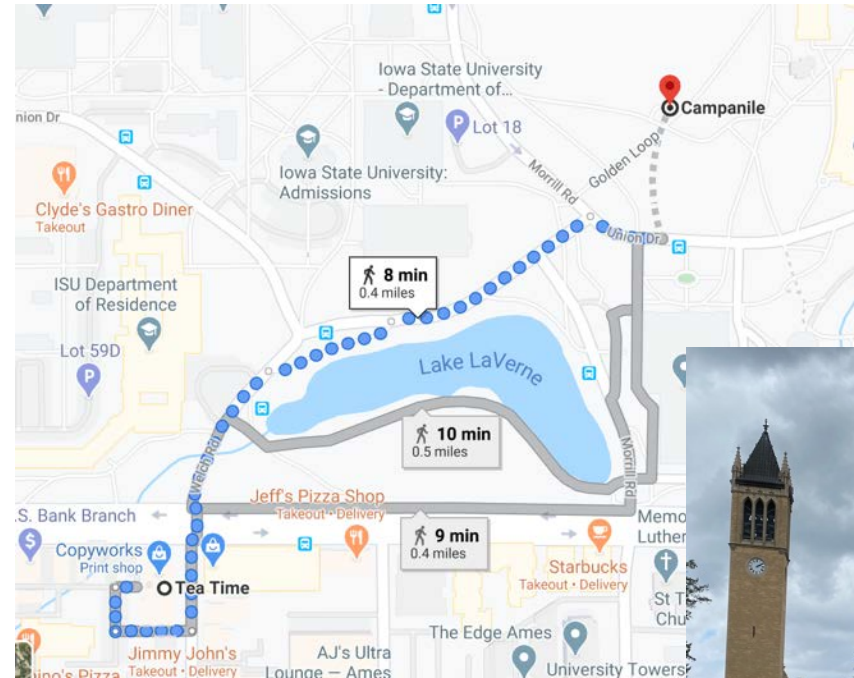
Walk 4- 1.5 miles

- Cy 13: 3619 Stange Rd.
 - Cy 12: 3725 Stange Rd.
 - Cy 15: 2622 Stange Rd.
 - Cy 14 : 2733 Stange Rd.
-
- Cy 10: 2500 Duff Ave
- May want to drive here on your way back toward town. It is 3.9 miles from the vet school. This is the last outdoor Cy statue.



Main Campus

- Get yourself a Bubble Tea from “Tea Time” (107 Welch Ave)
- Walk over to see the swans in Lake Laverne, the Fountain of the 4 Seasons, and the Campanile (2335 Union Drive). Classic spots for ISU photos in your White Coat & Cap/Gown.



Tedesco Environmental Learning Corridor

- A 3.5 mile roundtrip walk from the Old Orchard mobile home park.
- 2710 S Loop Drive walking/bike entrance (no parking)
- 3410 S University Blvd Main Entrance (Parking lot)
- Great for walking your dogs, a quick bike ride, watching geese in the pond, catching fireflies, and pet photography.



Stuart Smith Park

- Paved trails along the Squaw Creek.
- Children's Playground
- Trails connect to Brookside Park.



Brookside Park

- Playground
- Pavilion
- Skate Park
- Tennis Courts
- Paved Trails



Ada Hayden- 5205 Grand Ave

Perfect for Fishing, Hiking, Kayaking, Bird Watching, Skating, Biking and picnics/grilling.

TRAIL INFORMATION

Crushed Rock Upland Trail	1.2 Miles
Outside Loop Hard Surface	2.8 Miles
North Loop	1.4 Miles
South Loop	1.8 Miles
Figure 8	3.2 Miles

PARK HOURS: 6 am to 10:30 pm



Reiman Gardens- Free Entry with ISU ID

(Sorry, no pets allowed)



ISU Ice Arena- 1507 Gateway Hills Park Drive



ISU Student Special: Wednesday evenings (September - April) 8:00 - 9:30 PM. \$4.00 Admission and \$2.00 Skate Rental with ISU Student ID.

Petersons Pit

Fishing, Swimming, Hiking, Horseback Riding, Kayaking, etc. No dogs on the beach, but they are allowed on the trails and the dock.



Ledges State Park- Hiking, Camping, Picnics



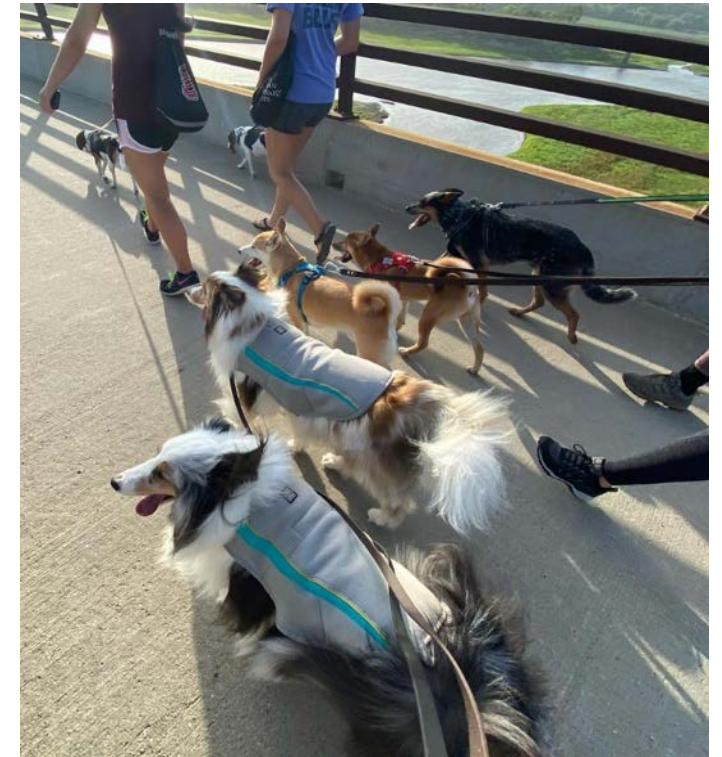
McFarland Park- Hiking, fishing, picnics, etc...



High Trestle Trail

2335 Qf Lane Madrid, IA 50156

- 25mile trail for hikers and bikers
- The bridge lights up at night.
 - April through October (sunset to midnight)
 - November through March (sunset to 9pm)



Hertz Family Woods & Nature Preserve

25369 Country Club Rd, Nevada, IA 50201

- Paved trail around the nature preserve, with unpaved trails within.
 - Plant identification cards displayed along trails.
- ***No on-site trash cans. Please take your dog bags with you.



Ames Mainstreet Farmer's Market

SATURDAYS

May - Sept: 8:00am - 12:30pm

October: 9:00am - 12:30pm

Food Trucks, Music, Produce Stands, Flowers, & Crafts/Art Vendors.



Vet School is Better With 2 & 4 Legged Friends!

Welcome to ISU CVM!



For more of Kama & Malu's adventures follow @alab0i