

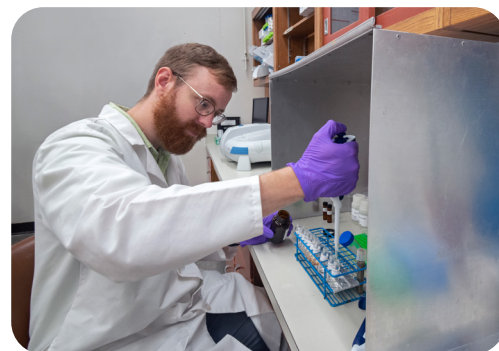
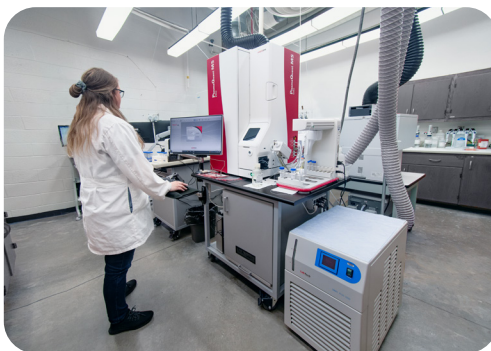


IOWA STATE
UNIVERSITY

Analytical Chemistry Services Section

ABOUT US

The Analytical Chemistry Services (ACS) Section of the Iowa State University Veterinary Diagnostic Laboratory (ISU-VDL) offers a large variety of analytical chemistry testing services. The ACS Section's routine testing services are focused in the areas of **toxicology and nutrition** and include a menu of tests which are offered on a regular weekly schedule. The ACS Section also offers Analytical Chemistry Research Services and can develop customized analytical methods tailored for particular projects.



OUR SERVICES

FREQUENTLY REQUESTED TESTS

Trace Mineral Panel
SERUM, TISSUE, AND FEED

Mycotoxin Panel
CORN-BASED FEEDS

Toxic Element Panel
TISSUE AND FEED

Ionophore Panel
CORN-BASED FEEDS

Water Quality Panel
includes total dissolved solids,
nitrate, sulfur, and coliform

Vitamin A and E
SERUM, TISSUE, AND FEED

**Vitamin D
(25-hydroxy)**
SERUM

Nitrate/Nitrite
OCULAR FLUID, FEED, WATER

**Mass Spectrometry
Screen Combined**
GI CONTENTS, TISSUES, AND
FEEDS includes GC/MS and LC/MS

ADDITIONAL TESTING:

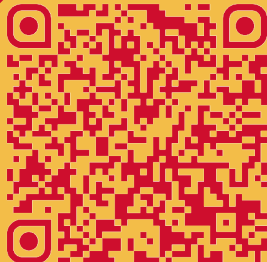
- ✓ **general veterinary drugs** in various sample types
 - ✓ **harmful algal bloom toxins** in water
 - ✓ **beta lactam antibiotics** in milk
 - ✓ **anticoagulant rodenticides** in liver and blood
 - ✓ **bone profile** (includes bone ash, bone density, calcium, and phosphorus)
-

Please visit the ISU-VDL's Tests and Fees web page for a current list of the ACS Section's tests offered, testing schedule, fees, and turn-around times:



PLUS MANY MORE ➔

SCAN FOR RESEARCH SUPPORT



In addition to providing world-class routine diagnostic testing services, the ACS Section also provides analytical support for various research projects. The ACS Section can develop customized analytical methods tailored for particular projects. Common projects requiring analytical support include: pharmacokinetic studies, veterinary drug residue analyses, and environmental contaminant analyses. The lab has significant expertise in small molecule quantitative and qualitative analyses.

For additional information or to complete a Research Projects Request Form, please visit the ACS Section's Research Services web page.

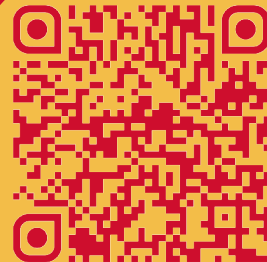
vetmed.iastate.edu/vdl/laboratory/analytical-chemistry-services/research-analytical-support

VDL Contact Information

E. isuvdl@iastate.edu

P. 515-294-1950

SCAN FOR ADDITIONAL INFORMATION



For additional information, please visit the ISU-VDI's Analytical Chemistry Services Section home page:

vetmed.iastate.edu/vdl/laboratory/analytical-chemistry-services