



Public Works Department  
Engineering Division

515 Clark Ave.  
Ames, Iowa 50010

515.239.5160

**Contact Information:**

Contractor  
Con-Struct  
515.232.6443

Project Manager  
Corey  
515.509.4341

Public Works Department  
515.239.5160

Project Observers  
Jared  
515.203.0795

Project Engineer  
Hafiz  
515.239.5245

# Notice of Construction

## SOUTH 16<sup>TH</sup> STREET

### PHASE II

## Apple Place to West of S. Riverside Drive

**Starting Date:** Weather permitting, **Monday July 21, 2025.**

**Description of Work Activities:** The City of Ames has contracted with Con-Struct to do improvements along S. 16<sup>th</sup> Street. You may notice utility flags as the underground utilities are located prior to construction commencing.

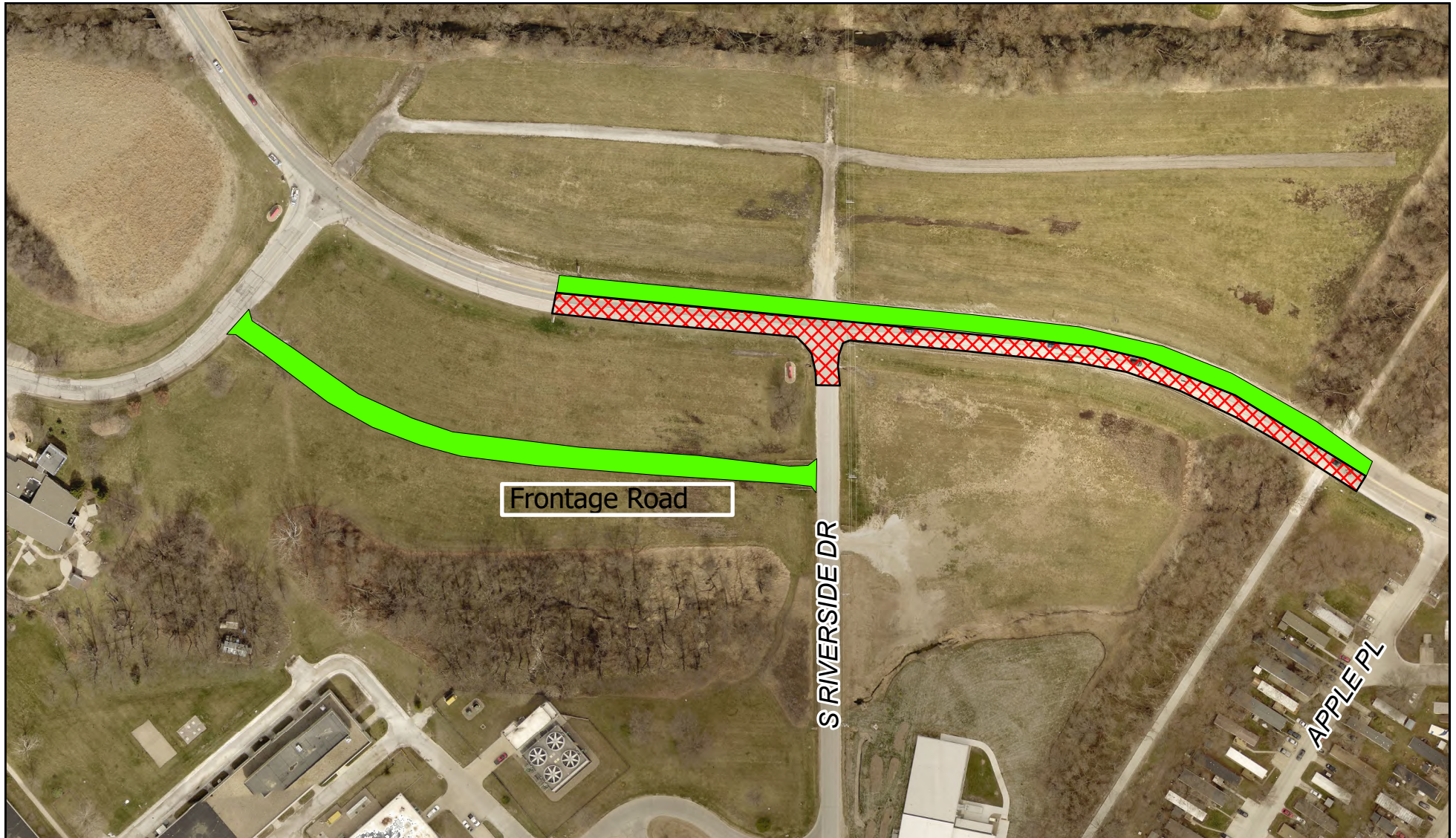
**Starting Monday July 21<sup>st</sup>,** Con-Struct will begin pavement removal along S. 16<sup>th</sup> Street. Following the pavement removal, their subcontractor will start working on the underground improvements. **Two-way traffic will be maintained on S. 16<sup>th</sup> St throughout the project.** **However, access to Vet Med via S. Riverside Dr will be closed. Detour access to S. Riverside Dr will be via Christensen Dr and the Frontage Road.** Please note that the trail along S. 16<sup>th</sup> St will also be closed throughout the project.

**Anticipated Duration:** The contractor is anticipating **4 to 5 weeks** to complete this phase.

**Action Required:** The map on the back of this sheet shows the approximate extents of the construction zone. All are encouraged to take note of this construction activity in the area and allow extra travel time as *delays may occur*. As always, caution should be exercised when traveling through the construction area.



# South 16th Street Widening



Work Area

## South 16th St - Apple Pl to Christensen Dr

N

